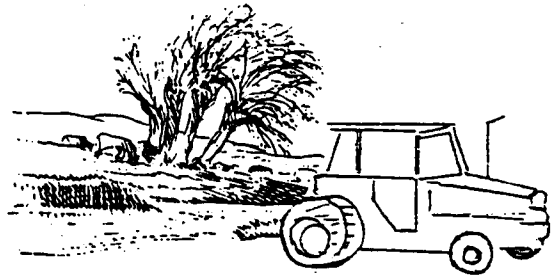


THE HADLEIGH SOCIETY



MAY 1993

ALDHAM AND THE INTERNAL COMBUSTION ENGINE

A tale of many a village - by Pamela Oldroyd

Aldham's decrease in population from 234 in 1871 to 186 in 1921 reflected periods of agricultural depression. The drop from 163 in 1951 to the low point of 126 in 1961 had a very different, and irreversible cause - the increasingly mechanized character of farming.

The internal combustion engine very nearly killed the village, but it was instrumental in its subsequent revival when, in the shape of the motor car, it enabled people to live in Aldham but work and play beyond its boundaries. It was, however, a very different community that emerged - indeed, one wonders if 'community' is the right word to use.

The change is demonstrated by a comparison of occupations of Aldham residents 1871 and 1990.*

1871 - Men 38 agricultural workers, 1 blacksmith, 1 common carrier, 2 farm bailiffs, 7 farmers, 1 farm steward, 1 innkeeper, 1 miller, 1 parish clerk, 1 rector, 1 shepherd, 1 wheelwright. (Total 56).

Women 8 domestic servants, 1 dressmaker, 1 farmer, 1 school mistress. (11).

1990 - Men 2 agricultural workers, 1 antique dealer, 1 British Council officer, 1 cabinet-maker, 1 carpenter, 1 college liaison officer, 1 company director, 1 dental surgeon, 1 digger driver, 1 doctor, 1 electrician, 1 executive - BT, 3 farmers, 1 foundryman, 1 funeral director, 1 gamekeeper, 2 garage proprietors, 1 haulage contractor, 3 lorry drivers, 1 machine operator, 5 managers - credit, maintenance, product, purchasing, sales, 1 marketing consultant, 1 optician, 1 pilot - aircraft, 1 postman, 1 shipping agent, 1 shipping broker, 1 solicitor, 1 steward. 15 retired. (Total 54).

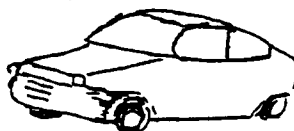
Women 1 advertising executive, 1 college lecturer, 1 company director, 1 company secretary, 1 conciliation service co-ordinator, 1 dental practice manager, 1 farmer, 1 garden centre assistant, 1 hospital sister, 1 pharmacist, 1 revenue officer, 2 secretaries, 1 school secretary, 1 social services clerk, 1 social service day-carist, 1 teacher. 6 retired. (Total 23).

The dramatic increase in professional, managerial and executive jobs for both men and women is notable, but the great diversity of occupations is more significant. There is no more cohesive force in a community than common occupation - as mining communities testify. Aldham has certainly lost this cohesive force.

Not only is there diversity of employment. Car ownership enables people to pursue a diversity of leisure activities outside the parish. The days have long since gone when the Sunday School outing and the church bazaar were the excitements of the year!

Also, when people walked or cycled from A to B it was easy to stop for a chat. Now we wave as we pass each other in our little metal boxes.

(to be continued)



* Sources
1871 Census
1990 Door to Door
enquiry

ENVIRONMENTAL GROUP REPORT - Michael Greenwood RIBA

Planning Applications: Period 24th February to 14th April 1993(7 weeks)

- 7 Applications were inspected
- 2 related to garage extensions
- 1 (outline) was for new dwellings in Conservation Area
- 1 involved insertion of window for door in Hadleigh Town Hall (Listed)
- 1 involved demolition of part of Wilson's Corn and Milling Company building.
- 1 related to continued use of dwelling
- 1 involved increase in height of part of building

Objections were submitted in relation to two applications. The outline planning application for a two story dwelling and vehicle access in the Benton Street Conservation Area is still under review.

Further comments have been made on the Draft of the 'County Service Promise'.

FORBEARS TO BE PROUD OF - The following story was received from a Society member who wishes to remain anonymous

' As the Reverend Canon Griffin stated in the Easter Newsletter, I can verify it is possible to achieve a great deal, once you take the first step.

My parents had taken the first step in troubled times and gone west, with my brother and me, to work as cook and Butler/Chauffer. They found lodgings for us and we went to school locally.

My father had been engaged only if he would shave off his moustache and promise not to drive at more than 20 m.p.h. The pay was £1 a week each. The next year I left school and went to work, looking after 2 boys, at a shilling (5p) a week and my keep.

By 1937 my parent's aquired their own flat and got the furniture out of store and by 1938 my father had started his own taxi business. My brother attended Grammer School and on leaving joined the Royal Marines - after a Careers Officer had taken the boys to see the R.M. Band in full rig. Then war was declared and my brother was lost at sea (aged 19).

My parents survived all these trials and tribulations and prospered. My mother worked as a temporary cook into her seventies, as father had omitted to buy the stamps necessary to obtain a pension! Even so, my mother had enough put by to buy a property in Hadleigh and had many happy years in her garden.

It is good to have a proper respect, not only for yourself but for your Mother and Father, who raised you through all their own troubles like their parents before them. They set an example to our children and fellow men to follow.

So, if you have a problem, give it some thought and ask for help, and you will be guided. Mother loved to quote, "Do the thing nearest" and "Fight the good fight". '

LOCAL HISTORY QUESTION - from Roger Kennell

Q. In parts of the High Street and Angel Street Hadleigh, spring water once ran in open gutters. Many unsuspecting passengers alighting from cars got a cold wet foot. In what year were these mediaeval drains diverted underground in the High Street. (Invert page for answer).

LETTER TO THE EDITOR :

Sir, It seems that the trees and shrubs in Toppesfield Close were planted as memorials. One still has a label "In memory of Mrs R.E. Verlander". Another label "In memory of Mr William Cook" has become detached and I have it for safe keeping.

Can anyone tell me more about this? (& the rest of us...Ed.)

John Clayton
Erie House, High Street
Hadleigh, Suffolk IP7 5AG

DAY VISIT TO HARWICH

A party of 16 or so Society members and relatives made a return visit to Old Harwich earlier in the month and had a most interesting day, despite a somewhat grey start.

Old Harwich is a planned 13th century town built on the grid system with narrow alleyways serving as windbreaks and shortcuts to the streets which all lead down to the harbour.



Originally it was a walled and moated town defended by a castle. A tiny part of the moat remains and sections of the old wall form part of a building or garden boundary. The town is steeped in history and it was visited by many famous characters. Seafarers in the 1500's like Sir Francis Drake, fitted out their ships in Harwich for their expeditions to waylay Spanish galleons laden with silk and jewels.

In 1561 Queen Elizabeth I is said to have stayed in the town which she described as "pretty and wanting for nothing". Christopher Jones, master of the "Mayflower" which took the Pilgrim Fathers to America in 1620, was a Harwich man and the house he lived in is in King's Head street. Later King Charles II took his first pleasure cruise from Harwich and when the famous diarist Samuel Pepys was Member of Parliament for the town, Harwich was headquarters of the King's Navy.

(extract from official pamphlet 'A taste of old Harwich: Heritage Trail)



"Trees for all ages" is the theme of National Tree week 1993, which runs from November 25 to December 5. Linking in with the European Year of Older People, National Tree Week will focus particularly on the value of old trees, the importance of planting and managing the old trees of the future, and on involving people of all ages in planting and conservation events.

Tree measurers wanted The Tree Register of the British Isles, which maintains records of exceptionally tall, large in girth or rare trees, and those of historical significance, is looking for volunteer tree measurers in all parts of Britain and Ireland. The register so far has 95,000 trees.

If you can help or know of any exceptional trees, contact Vicky Schilling, 2 Church Cotts, Westmeston, Sussex BN6 8RJ; telephone 0273 845312.

ANNUAL GENERAL MEETING - HADLEIGH TOWN HALL
Thursday, 24th June, 1993 from 8 p.m.

This will be the Society's 11th Annual General Meeting and all members are urged to attend and put forward their nominations for service on the Executive Committee.

A nomination form is attached for your convenience and this should be completed and sent to reach Graham Panton CE MIEE, the Society's outgoing chairman, by 10th June 1993 at the address shown on the form.

Do try and join us if you can and make your views known.

Cheese and wine and other refreshments will be available after the meeting and we shall look forward to the pleasure of your company.

NOEL TURNER AWARD

No Award is to be made this year.

PUBLIC INQUIRY: Alteration No.1 to Babergh District Plan

The Society have continued to be well represented by our Vice Chairman, John Bloomfield, and Environmental Group Chairman, Michael Greenwood, who have expended considerable time and energy on our behalves, preparing and submitting proofs relating to housing and the proposed new 20,000 Sq ft supermarket and associated car parking and traffic problems.

Combined submissions were presented to the Inspector representing the views of the Hadleigh Society, the Hadleigh Residents Group and the Town Council. Strong representations of a similar nature were also made by the Suffolk Preservation Society.

The opening meetings were quite well attended with a good showing from members of the Society and those making individual submissions.

Editor: Jim Betteridge



Telephone: Hadleigh 823991